

Spirit BY SWIFT

CONCEPT RANGE

EXCLUSIVE
TECH FLAT
GREY
EXTERNAL
COLOUR



EXCLUSIVE RANGE
AVAILABLE AT



2020

Spirit CONCEPT BY SWIFT

The Concept is an all-new coachbuilt range launched for 2020 and is both well-equipped and well-designed. The Concepts have been mainly introduced with families in mind, with up to six berths and six travelling seats. Three of the five models come with a spacious overcab bed.

The Spirit Concept range boasts a fantastic level of specification and enhancements which are all included in the 'Spirit Pack' (see below).

One unique inclusion is the Tech Flat Grey external colour which is exclusive to the Spirit range and cannot be purchased anywhere else.

Every Spirit Concept comes with an exclusive package of innovations:

- Swift Command: an app based vehicle management system to remotely control many of the vehicle functions
- Swift Command Tracker: a pre-installed Thatcham Cat 6 approved pro-active Tracker with option to subscribe.
- Connect Direct: an online customer service account for new owners with a host of benefits including access to information 24/7 & service reminders

SPRIT PACK

- Tech Flat Grey Exterior
- Cab Air Conditioning & Cruise Control
- Fiat Integrated Satellite Navigation, DAB Radio & Steering Wheel Controls
- Rear View Mirror Reversing Camera
- Reversing Sensors
- Fiat 16" Alloy Wheels
- Solar Panel (100 watt)
- Awning Canopy
- LED Daytime Running Lights
- Driver & Passenger Airbags
- TV Aerial
- Captains Chairs
- Flyscreen Door
- Gloss Black Headlight Bezels, Skid Plate & Front Grille
- High Level Instrument Cluster
- Fiat Leather Steering Wheel
- Fiat Techno Silver Dashboard Kit
- Habitation Door Upgrade with Window & Bin
- External BBQ Point, Shower Point & 240v Socket
- Microwave
- Winter Pack
- Omnivent Extractor Fan
- Illuminated 'Swift' Stepwell Light
- Bespoke Graphics & Upholstery inc "Spirit" Logo Embossed in Seating
- Removable Carpets, Scatter Cushions & Curtains
- Engine Battery Shut Off Isolation Switch
- Wardrobe Lights
- Truma Drivesafe Gas Changeover Regulator

CONCEPT RANGE SPECIFICATION

BASE VEHICLE

- Exclusive Tech Flat Grey Cab Colour with Matching Bumper & Bespoke Graphics
- Fiat 2.3 JTD 120 BHP Engine
- Cab Air Conditioning & Cruise Control
- Fiat 16" Alloy Wheels (black & silver)
- Fiat Integrated Satellite Navigation, DAB Radio & Steering Wheel Controls
- LED Daytime Running Lights
- Rear View Mirror Reversing Camera
- Reversing sensors
- Fiat Leather Steering Wheel
- Fiat Techno Silver Dashboard Kit
- Gloss Black Headlight Bezels, Skid Plate & Front Grille
- High Level Instrument Cluster
- Engine Battery Shut Off/Isolation Switch (prevent discharge in storage)
- Driver & Passenger Airbags
- Thermal cab window covers
- Captain's chairs with:
 - Swivels (412, 464 & 494)
 - Position, height and rake adjustment
 - Two armrests
 - Fully upholstered covers
 - Seat base surrounds
- ABS brakes
- EBD (electronic brake force distribution)
- Immobiliser with rolling code
- Variable power steering
- Key fob operated remote central locking of cab doors
- Electrically operated and tinted cab windows
- Headlamp height adjustment
- Adjustable steering wheel position
- Central cup holder with dash mounted holder for full width tablet and pocket for smartphone with USB port for charging
- Door pockets with bottle holders
- 12V socket and USB socket
- Fix & Go Puncture Repair Kit

HEATING & PLUMBING

- Grade 3 classification for heating and thermal insulation (for sub-zero ambient temperatures)
- Dual fuel heating with Truma Combi 4 1.8kW electric/4kW gas/3.8kW dual or Truma Combi 6 1.8kW electric /6kW gas/5.8kW dual (model specific)
- Digital programmable controller for heating and hot water
- Truma regulator
- 100 litre internal fresh water tank with level sensor (90 litre external fresh water tank on 412)
- 60 litre waste water tank with level sensor
- Manual drain valves on water tanks
- Pressurised fresh water system with self-priming pump and accumulator

CUSTOMER SERVICE

- Exclusive online Connect Direct account with direct access to Swift

BODY AND EXTERIOR EQUIPMENT

- Awning Canopy (white casing)
- Solar Panel (100 watt)
- TV Aerial
- Habitation door upgrade with window, bin & central locking
- External BBQ Point, Shower Point & 240V Socket
- Winter Pack
- Distinctive Streamlined Front Profile
- SMART Plus Construction
- GRP front low-line pod with side window (476, 486, 494)
- GRP Lowline pod (464 & 412)
- Single key for all habitation doors
- Large exterior 'Garage' access door (476)
- Main habitation door with 2 point locking system and integrated door retainer
- Flush fitting, double glazed, tinted acrylic windows with night latch ventilation
- Exclusive styled LED front and side marker lights
- Exclusive LED rear light clusters
- Low energy LED exterior awning light
- High-level brake light
- Illuminated 'Swift' Stepwell light
- Compartment for 2 x 6kg gas bottles with propane regulator and propane hose
- Bike rack fixing rails fitted to the rear
- Truma drivesafe gas changeover regulator

KITCHEN

- Dometic 8 series 85 litre automatic energy selection fridge with 230V, gas and 12V operation
- Combination thermostatic oven, grill, 3 burner gas hob with electronic ignition and glass hob lid with auto gas shut-off functionality
- Built-in microwave oven with digital controls
- Kitchen roof light with flyscreen and blind
- Kitchen work top in 'Fero' dark grey with textured finish and durable stainless steel sink
- Foldaway work top extension (476, 486 & 494)
- Drawer storage under oven (model specific)
- Vector chrome effect kitchen mixer tap
- LED strip lighting in china locker
- Omnivent Extractor Fan

WASHROOM

- Washroom design with vanity unit, sink and shower
- 32mm thick entrance door with domestic style mortice lock and handle
- Chrome effect mixer tap for vanity and shower
- Thetford cassette toilet with electric flush and 18 litre wheeled tank
- Micro-heki skylight with flyscreen (except 464 which has side window)
- Mini LED down lights
- High gloss white washroom wallboard
- Overhead towel shelf

LIVING AREA

- Bespoke Upholstery including 'Spirit' Logo Embossed in Seating
- 'Vittata' soft furnishing scheme
- Flyscreen Door
- Wardrobe Lights
- 'Zebrano' woodgrain with contemporary colouring
- Chrome handles with push-button locks on overhead locker doors
- Ergonomically shaped rear travelling seats
- Lap and diagonal seat belts on all designated passenger seats
- High performance, durable Swift AirWave foam in seats and backrests for greater seating and sleeping comfort
- Two position front seating arrangement with two forward facing travelling seats (464 & 494)
- Four-position front dinette seating with two forward facing and two rearward facing travelling seats (476 & 486)
- Bed mattresses and lounge bench seat cushions supported by beech slats for extra comfort
- Seat backrest ventilation boards
- Wall mounted dining tables (464, 476, 486 & 494)
- Free standing dining table (412 only)
- Exclusive Duvalay Duvalite Gravity Luxe mattress (Fixed bed & Luton beds)
- Luton over cab fixed beds (476, 486 & 494)
- Lounge seat and bed tops gas spring assisted for easy access (except travelling seats)
- Pleated 3-sided blinds with flyscreen's on all windows
- Metal curtain tracks for washroom curtains
- MPK roof light in lounge area with flyscreen and adjustable pleated blind
- Removable carpets, scatter cushions and curtains
- French Oak effect, high impact, scratch resistant floor lino
- Smoke alarm
- Carbon monoxide alarm

ELECTRICAL

- Swift Command & Swift Command Tracker
- Fully sealed, long life, 80 Amp-hour leisure battery below driver's seat
- 12V socket for rear passenger seats
- Minimum of four chrome 230V sockets and dedicated USB points
- Mains consumer unit with mains isolators and 12V fuse board
- 25 Amp/300 Watt charger/transformer for leisure batteries
- TV station with 230V and 12V sockets, aerial socket
- Ultra-low energy lighting system:
- LED downlights on undersides of lockers
- Over-locker LED ambient lighting
- 25 metre mains hook-up cable
- VIN CHIP ID system concealed within construction to deter theft & aid quick recovery



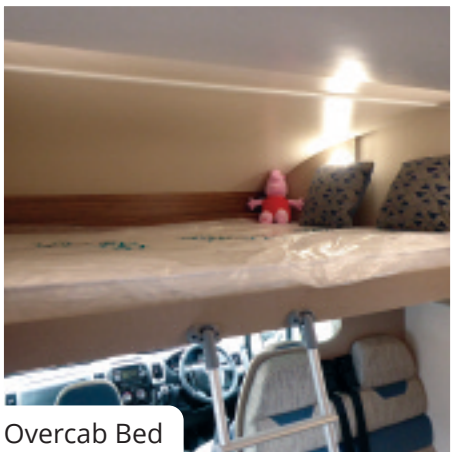
476 External



Cab Interior



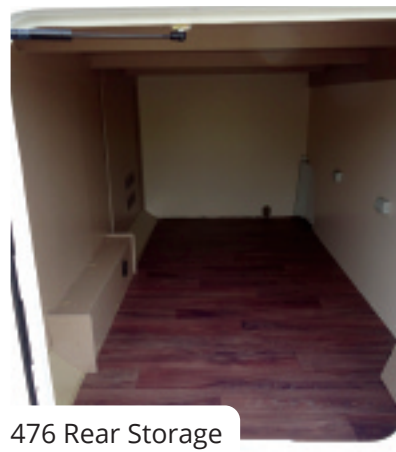
486 External



Overcab Bed



486 Rear Lounge



476 Rear Storage



476 Fixed Twin Beds



486 Internal



476, 486 & 494 Bathroom



476 Internal

dolphin hampshire

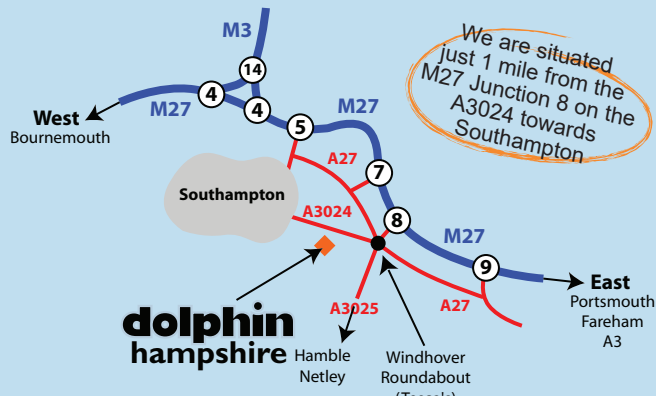
478 Bursledon Road (A3024),
 Southampton, Hampshire, SO19 8NH
 ☎ 02380 406777

how to find us

From the M27

Leave the motorway at Junction 8 and head towards Hamble / Bursledon from the junction. This will take you onto a short dual carriage way which ends at a large roundabout. At the roundabout follow the signs for the A3024 towards Southampton (Bursledon Road) which is the third exit from the roundabout.

Follow the A3024 (Bursledon Road) for approximately ¼ mile, straight across the traffic lights and we are situated about 100 metres past the traffic lights on the left hand side.



about dolphin

Dolphin prides itself on being a family run business and we have over 45 years experience in the motorhome industry. We understand the extreme importance of customer care, and we place great emphasis on looking after both our existing and potential customers to give you the service you deserve. With several of our staff having owned motorhomes personally they share the same passion and enthusiasm for the open road plus with a friendly and honest approach.

So whatever your motorhoming needs, please pay our Southampton or Christchurch branches a visit where we look forward to meeting you and discussing your requirements.

The Dolphin Team



dolphin dorset

Iford Bridge (Main A35), Barrack Road,
 Christchurch, Dorset, BH23 2QA
 ☎ 01202 479444

how to find us

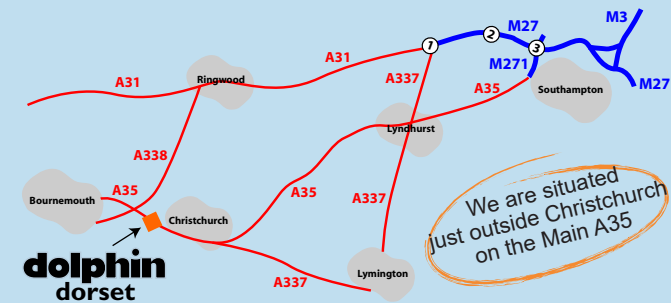
We are located on the main A35 between Christchurch and Bournemouth just by the Iford Bridge.

From A338 Ringwood to Bournemouth

From A338 Ringwood to Bournemouth, come off & join the A3060 towards Christchurch & follow for around one mile. At the roundabout take the first left onto the A35 (Iford Bridge pub on your right) & follow down for ¼ mile & our site is situated on the left hand side.

From Christchurch Town Centre

Follow signs for the A35 towards Bournemouth which will also take you onto Barrack Road. Continue to follow A35/Barrack Road & you will come to a roundabout with a petrol station, continue straight on & our site is situated 100metres on the right hand side.



www.spiritbyswift.co.uk
www.dolphinmotorhomes.co.uk
sales@dolphinmotorhomes.co.uk

Opening Times: Both Branches

Monday-Friday: 9.00am - 6.00pm
Saturday: 9.00am - 5.00pm
Sunday: 10.00am - 4.00pm

OPEN 7 DAYS A WEEK ALL YEAR ROUND